

SEETAL SPRAY BOOTH P/L ABN 53 005 268 600
56 JERSEY ROAD, BAYSWATER, VICTORIA 3153.
TELEPHONE: (03) 9729 8733 FACSIMILE: (03) 9720 5684
EMAIL: paul@seetal.com.au www.seetal.com.au

DESCRIPTION OF THE SEETAL

V90 COMBINATION

SPRAY BOOTH AND LOW BAKE OVEN

The SEETAL V90 is a Semi Down Draught pressurised car spray booth oven with:

- (a) Heated Temperature controlled fresh air during the spray painting cycle, and
- (b) Direct fired heated air during the bake cycle.

The standard model is provided with concertina vehicle access doors, incorporating a personal access door built into one wing of concertina door arrangement and two laminated viewing windows. Extra escape door with viewing window is provided and fitted at suitable location.

The SEETAL V90 is designed to be constructed on a level concrete floor. The fans and direct fired heat machinery is arranged at the rear of the booth.

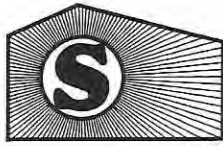
Assembly of a factory tested unit for easy assembly or relocation if necessary.

Seetal V90 Spray Booth Oven is manufactured to comply with all relevant regulations, local and national.

Electrical AS/NZS 3000 & AS 1825.

Gas Code AG 501 - 601.

AS/NZS 4114



SEETAL SPRAY BOOTH P/L ABN 53 005 268 600
56 JERSEY ROAD, BAYSWATER, VICTORIA 3153.
TELEPHONE: (03) 9729 8733 FACSIMILE: (03) 9720 5684
EMAIL: paul@seetal.com.au www.seetal.com.au

In the "spray" position, the fresh air is brought in from the outside through a duct system into the heating chamber for warming up (if necessary) to approx. 25°C or more. It will then be delivered via a **centrifugal** fan, to a plenum chamber over the top of the booth section. From there, the supplied air is passed first in down draught manner through filters in the ceiling to the working area. From there onwards air is moved horizontally towards an exhaust filter arrangement in back wall of booth.

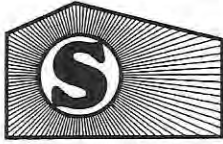
The "non-sparking" tube axial fan pushes the filtered air through the duct system to external atmosphere.

The Booth airflow and heating in spray or bake mode is a patented once through system and suitable for all types of Automotive Painting including **Water Based Undercoats and Paints.**

After the completion of the spray painting job, the operator sets the baking temperature and time then presses the "bake" button.

The control system of the spray booth will now automatically change the air flow to bake mode, and the direct fired heat unit will take air up to the required temperature (max 80°C) within approx. 1 1/2 min.

After the preset time for baking has been completed, the heater is automatically switched off, allowing the whole plant to cool down to a preset cooling temperature.



SEETAL SPRAY BOOTH P/L ABN 53 005 268 600
56 JERSEY ROAD, BAYSWATER, VICTORIA 3153.
TELEPHONE: (03) 9729 8733 FACSIMILE: (03) 9720 5684
EMAIL: paul@seetal.com.au www.seetal.com.au

SEETAL V90

DIMENSION:

Overall Height:	3400mm
Overall Length:	8100mm
Overall Width:	4200mm
Internal Height:	2800mm
Internal Width:	4100mm
Internal Length:	7100 Approx.
Installation area needed:	4200mm x 9000mm Approx

FRONT DOOR ARRANGEMENT:

Front door construction is concertina type, self supporting manufactured out of 0.9mm galvanised steel, hinged on full length piano hinges. Each wing will have center locking device to activate top and bottom pins, built into door shell. Upper door track and weight carrier arranged with C section and ball bearing runners. 6mm laminated glass window in each of the four door wings will be provided, one door wing will have built in service door (Escape door).

POWER REQUIREMENTS:

3 Phase 30 Amp per phase.
1 Neutral.
1 Earth.

INLET FAN:

Centrifugal fan, direct driven by 5.5 KW 3 phase electrical motor. Delivers 10,000 L/S of air.

EXHAUST FAN:

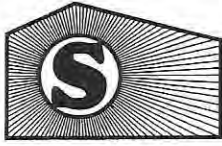
Tube axial, direct driven by 2.2 KW 3 phase electric motor.

HEATING SYSTEM:

Approved direct fired Gas L.P. or Natural with flame detection and supervision, as per Standard AG 501.
Fired with Seetal DF850 MJ Burner.
Firing rate at 450 MJ per Hour.

TEMPERATURE:

During spray painting - adjustable to 20°-25°C
During baking - adjustable to 35°C - 85°C.



SEETAL SPRAY BOOTH P/L ABN 53 005 268 600
56 JERSEY ROAD, BAYSWATER, VICTORIA 3153.
TELEPHONE: (03) 9729 8733 FACSIMILE: (03) 9720 5684
EMAIL: paul@seetal.com.au www.seetal.com.au

BAKING TIME:

Adjustable from 6 minutes to 60 hours.

AIR FOR SPRAY GUN:

Only available if the inlet fans and exhaust fan are working and interlocked by solenoid valve.

ELECTRICAL CONTROLS:

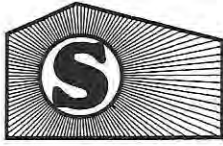
All functions are obtained from the booths' electrical control panel.

It includes the following:

- (a) Main switch for power.
- (b) Light switch.
- (c) Timer circuit for baking time.
- (d) Hour meter.
- (e) Stop button.
- (f) Button to select "spray" or "bake" cycles.
- (g) Temperature setting controls over spray and baking.
- (h) Temperature gauge with digital readout.
- (i) Burner control and fault lights.
- (j) Fan motor protection.
- (k) Fault detection and trouble shooting lights.

ILLUMINATION:

Ten (10) twin fluorescent, ceiling height light fittings, arranged in two rows, five fitting on each side. Including approved pressurising system.
Above light system is a certified type. Certification No: EX 1392 (Refer to supplied copy of Certificate of Conformity).



SEETAL SPRAY BOOTH P/L ABN 53 005 268 600
56 JERSEY ROAD, BAYSWATER, VICTORIA 3153.
TELEPHONE: (03) 9729 8733 FACSIMILE: (03) 9720 5684
EMAIL: paul@seetal.com.au www.seetal.com.au

INLET FILTERS:

Four easily changed filter units in ceiling. Filter change takes only 10 minutes.
Filter media Synfasan C5G.

EXHAUST AIR FILTER:

Easily replaceable dry filter located in rear wall.

DUCTS:

All galvanized construction, includes bird screen and weatherhood. Height to E.P.A. requirements.

ILLUMINATION AND DOOR GLASS:

6.3mm Laminated and metal sashed glass panels.
6mm Wire reinforced glass framed in metal sash.

BOOTH FINISH INSIDE AND OUTSIDE:

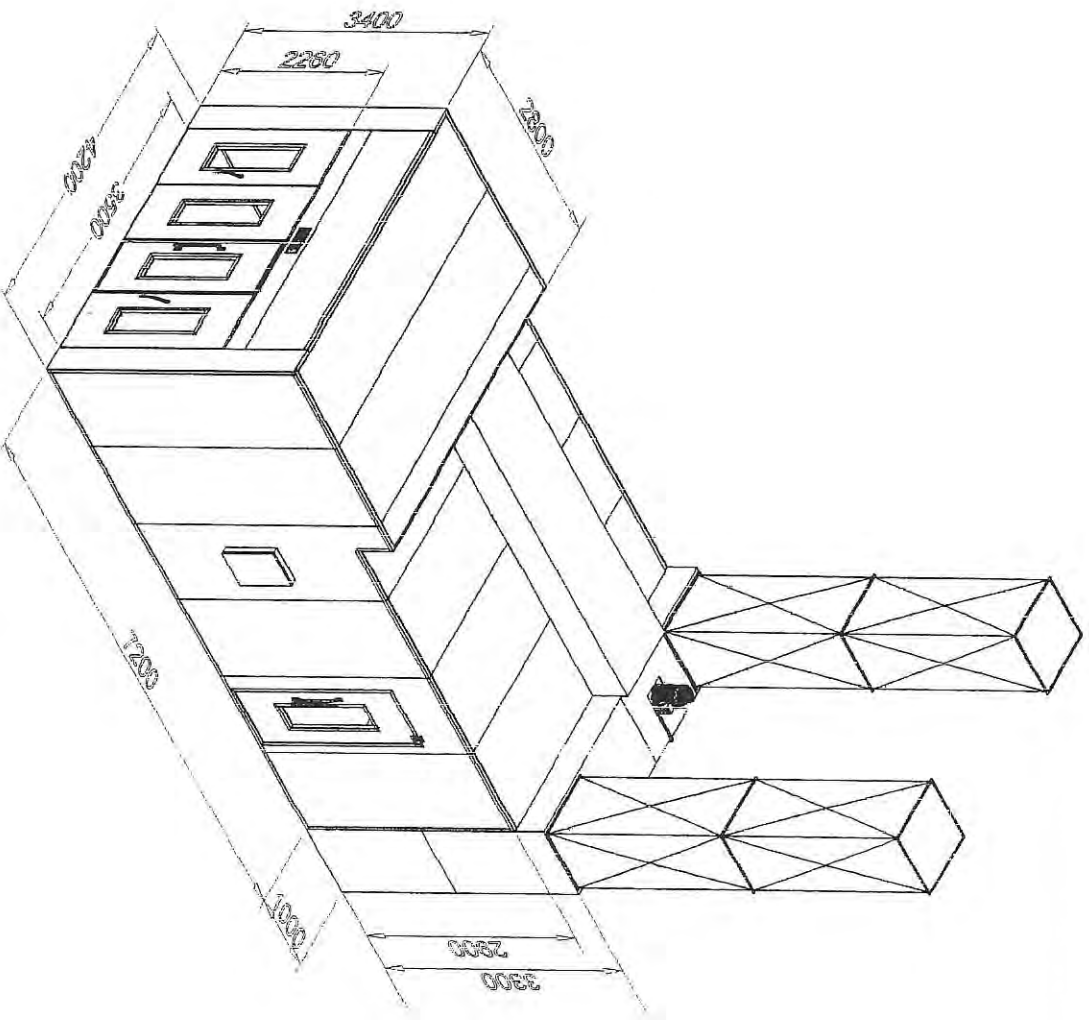
Full galvanized finish unpainted in Cherokee panels.

MACHINE PLANT:

Full galvanized and painted blue.

OPTIONAL EXTRAS:

1. 50mm Sandwich panel wall construction.
2. Ventilated paint mixing room.



RevNo	Revision note	Date	Signature	Checked

Itemref	Quantity	Title/Name, designation, material, dimension etc	Article No./Reference
drawn by WE	des'n by WE	Checked by PR	Approved by - date PR 14/02/07

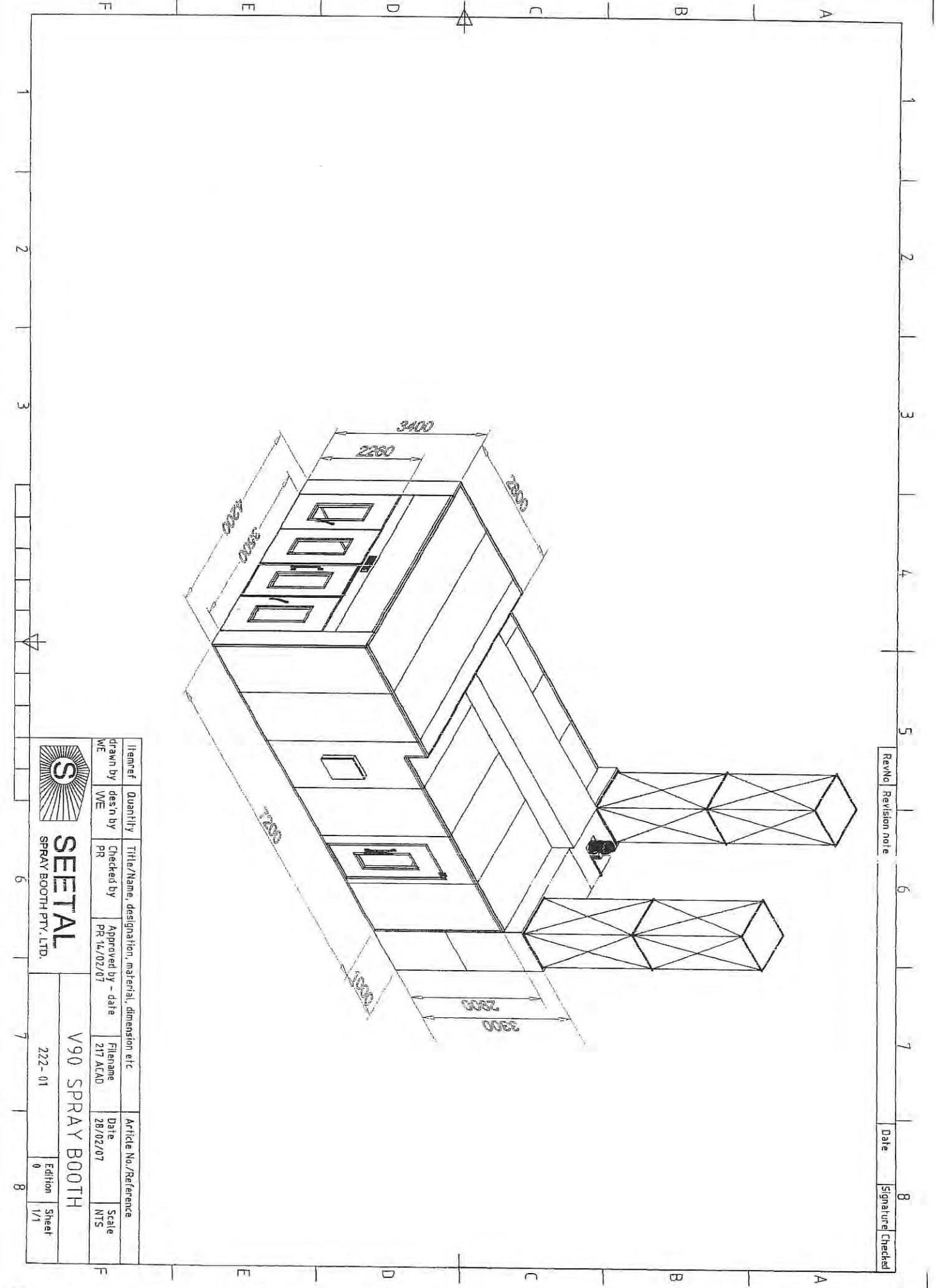


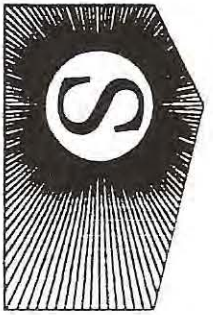
SEETAL
SPRAY BOOTH PTY. LTD.

V90 SPRAY BOOTH

222-01

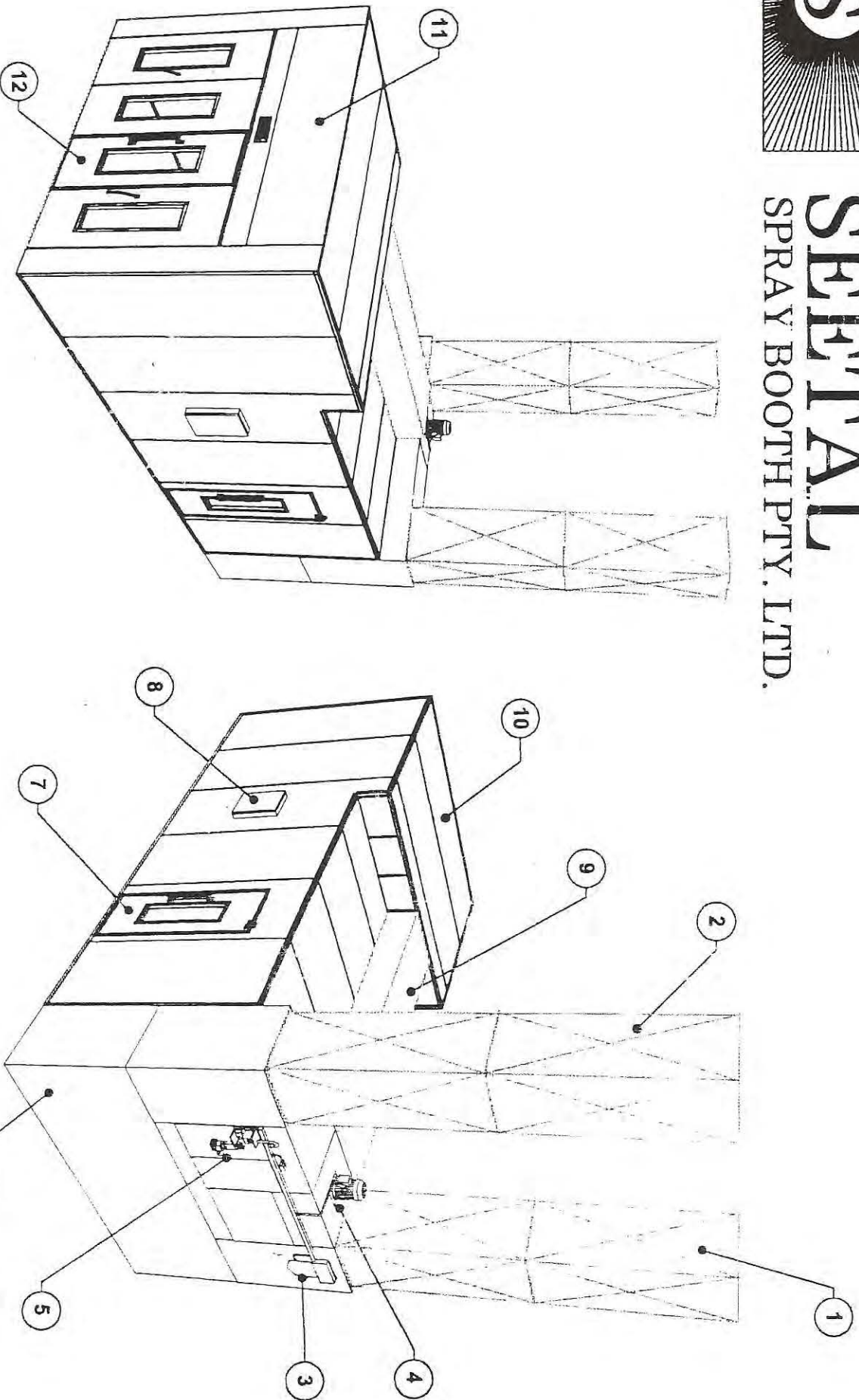
Edition 0
Sheet 1/1





SEETAL

SPRAY BOOTH PTY. LTD.



1	Air Exhaust Duct	7	Escape Door and Door Switch Assembly
2	Air Inlet Duct	8	Electric Control Board
3	Exhaust Fan Assembly	9	Plenum Air Supply Duct
4	Inlet Fan Assembly	10	Inlet Air Plenum Chamber
5	Burner Assembly	11	Front Door Frame Assembly
6	Exhaust Plenum and Exhaust Filter Assembly	12	Front Concertina Door Assembly

MODEL: V90 - SDD